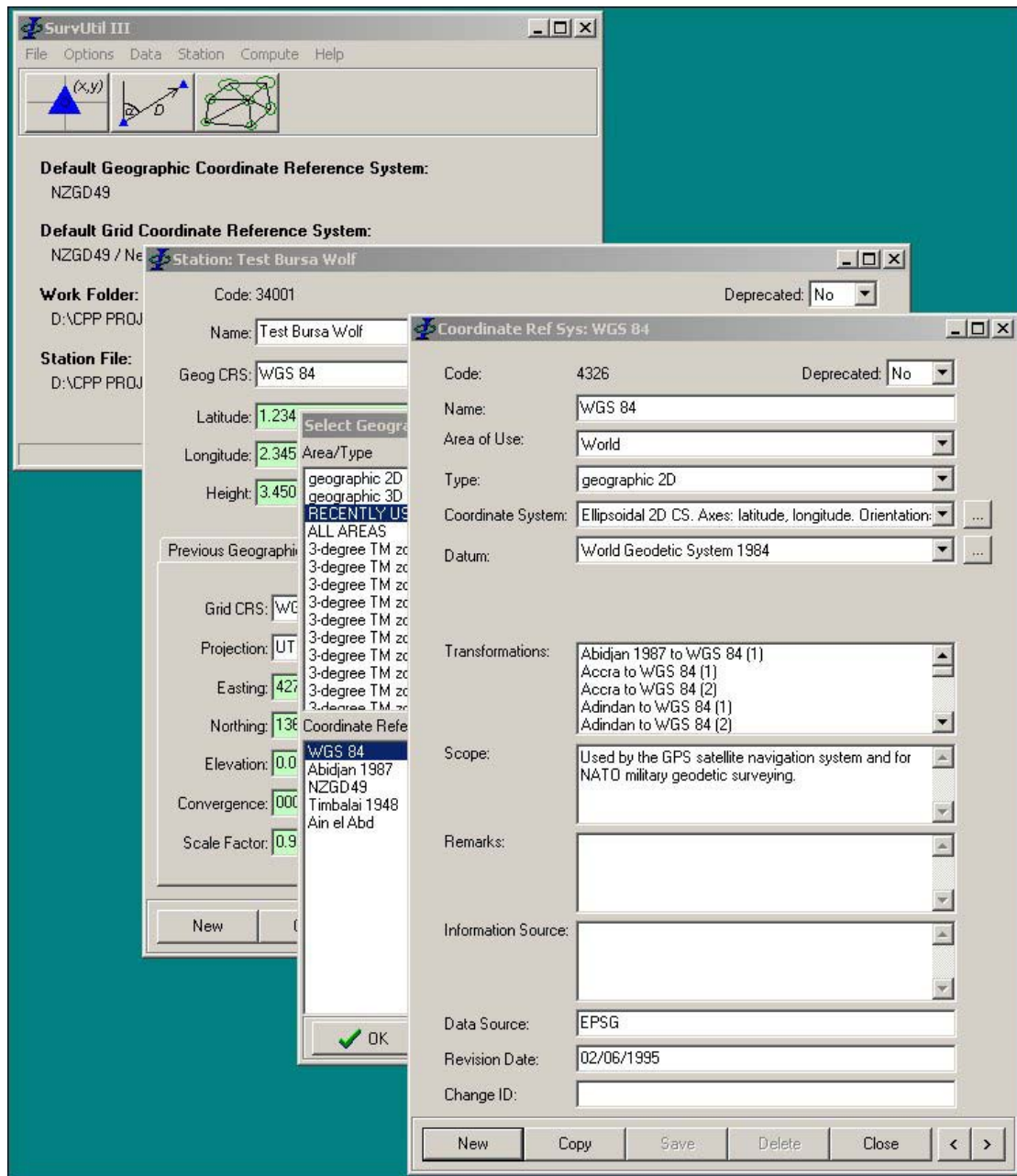




## SurvUtil

SurvUtil is a Windows NT/95/98/2000/XP program which provides geodetic computations.

The software incorporates the European Petroleum Survey Group (EPSG) parameters. User defined parameters may be added.



### *Features*

- Based on a proprietary relational database.
- Coordinate conversions: Geographic ↔ Cartesian ↔ Grid.
- Batch conversions.
- Input/output of stations.
- Ellipsoidal and grid forward and inverse computations.
- LS network adjustment.

All EPSG parameters are included in the database, which includes:

- 1900 coordinate reference systems
- 900 datum transformations
- 900 projections
- 300 datums
- 43 ellipsoids
- 57 coordinate operation methods