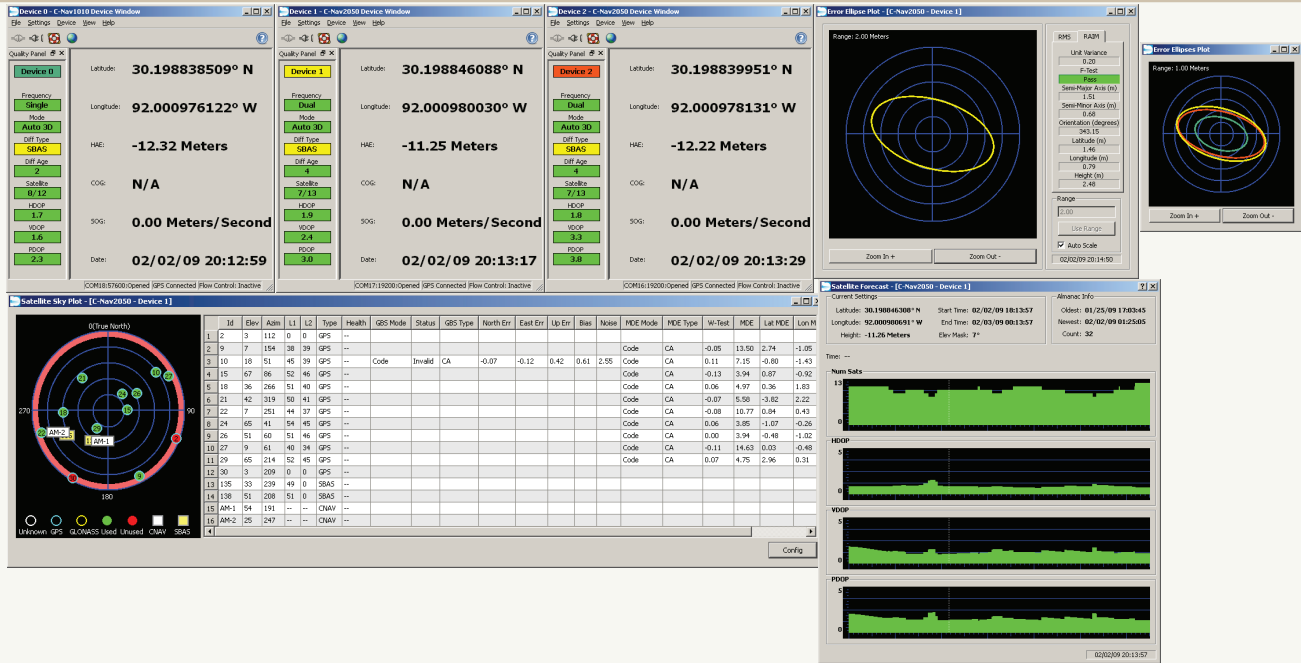


C-NAV DGPS



TAKE A CLOSER LOOK AT C-NAV :

C-MONITOR IS A WINDOWS APPLICATION FOR MONITORING AND EVALUATING REAL-TIME DGPS QA/QC AND PRECISE POINT POSITIONING INFORMATION.

C-MONITOR SUPPORTS THE OBSERVATION AND ANALYSIS OF ONE OR MORE DIFFERENTIAL GPS SYSTEMS.

C-NAV'S PROPRIETARY C-MONITOR SOFTWARE; TAKING THE UNCERTAINTY OUT OF YOUR POSITIONING REQUIREMENTS.

- Full QA/QC utilities, tests and statistical analysis
- User-friendly interface for easy configuration and display of data
- Navigation display with Vessel gyro input and navigation waypoints
- Visible Satellite status showing azimuth, elevation and signal strengths
- Data logging feature for detailed analysis and replay
- Supports the entire line of C-Nav[®] devices and data services



FEATURES

- Fully user-configurable
- Complies with NMEA requirements
- Complies with IMO RAIM standards and UKOOA 94 quality indicators
 - Unit Variance
 - F-Test
 - Error Ellipse
 - Rejected SV Error Details
 - Marginally Detectable Errors (MDE)
- Navigation Display with Vessel Outline Utility and Gyrocompass Input
- Alarms & Warnings (Green/Yellow/Red status information)
- Waypoint Utility for Range and Bearing calculation
- Skyplot of all visible GPS/GLONASS satellites, their location, orientation and health
- Variable scale scatter plot to monitor GPS position stability
- Table of GPS satellite elevation, azimuth and signal strength
- Real-time display of position information from a single, or multiple GPS receivers
- Time series plots including:
 - Differential age
 - HDOP, PDOP, VDOP
 - Number of satellites in solution
 - Error ellipse
- RTCM and NMEA Data Output Messages including:
 - GGA, GLL, GSA, GST, GSV, RMC, VTG, ZDA, HDT
- Supports all C-Nav[®] GPS devices

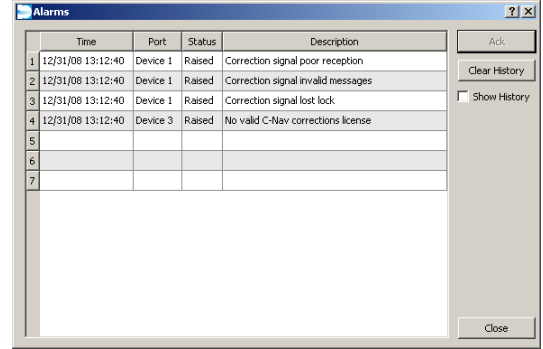


Figure 1: Alarms Screen for all Devices

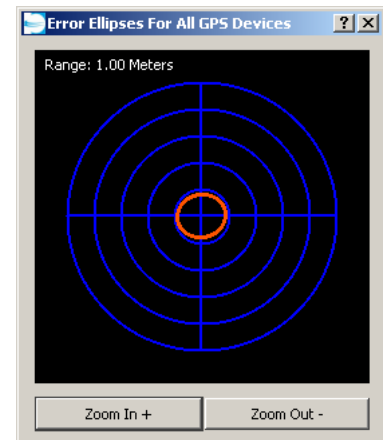


Figure 2: Error Ellipses Screen for all Devices

MINIMUM HARDWARE REQUIREMENTS

- Requires Windows 2000, XP, or Vista
- Pentium 4 CPU (1.5Ghz or higher) with at least 256Mb RAM
- One or more RS-232 serial interface ports
- USB port for Sentinel Security Key (dongle)

SUPPORTED GPS HARDWARE

- C-Nav2000
- C-Nav1000
- C-Nav1010
- C-Nav2050**
- C-Nav3050**
- Basic NMEA devices[^]

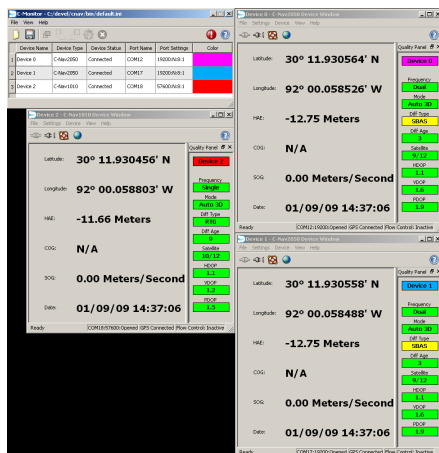


Figure 3: Device Window Screen

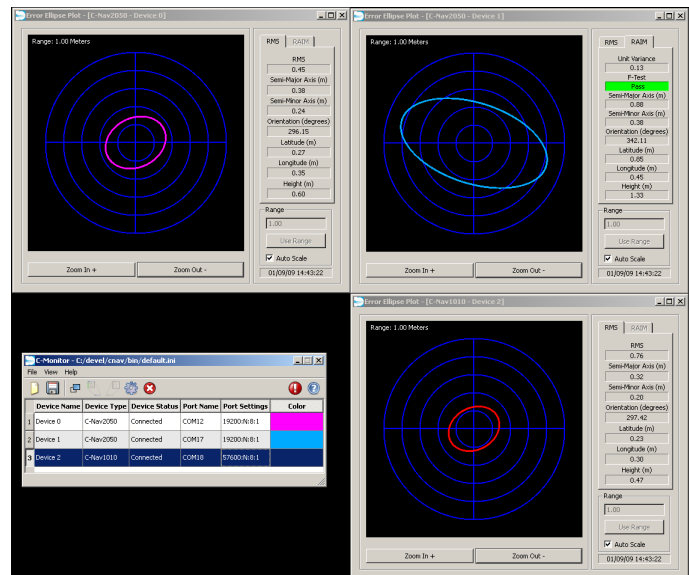


Figure 4: Error Ellipses Screen for Devices

** QA/QC data available only with C-Nav2050 and C-Nav3050 systems

[^] Some advanced features not available with some GPS's and NMEA devices, contact sales rep for more information

LAFAYETTE | 730 E. KALISTE SALOOM RD. | LAFAYETTE, LOUISIANA 70508 | TEL: +1 (337) 210.0000 | FAX: +1 (337) 261.0192
HOUSTON | 10615 SHADOW WOOD DR., STE. 100 | HOUSTON, TEXAS 77043 | TEL: +1 (713) 468.1536 | FAX: +1 (713) 468.1115
MEXICO | CALLE 55 N° 382 | CP 24117 | COL OBRERA | CIUDAD DEL CARMEN, CAMPECHE, MEXICO | TEL: +52 (938) 381.8973 | FAX: +52 (938) 381.8973
BRASIL | RUA MAURICIO SILVA TELES, 95, CEP 22640-210 | BARRA DA TIJUCA | RIO DE JANEIRO - BRASIL | TEL: +55 (21) 22102555 | FAX: +55 (21) 22102557
EUROPE | 5 HILLSIDE BUSINESS PARK (1ST FLOOR) | KEMPSON WAY | BURY ST EDMUNDS, SUFFOLK, IP32 7EA | TEL: +44 (1284) 703.800 | FAX: +44 (1284) 701.004
SINGAPORE | 10 CHANGI SOUTH LANE, OSSIA INTERNATIONAL BUILDING #03-01B | SINGAPORE 486162 | TEL: +65 (62) 95.9738 | FAX: +65 (62) 96.0098
SOUTH AFRICA | #5 MELODIE ROAD | KIRSTENHOF 7945, SOUTH AFRICA | TEL: +27 (21) 702.1870 | FAX: +27 (21) 702.1870
ANGOLA | RUA ANTONIO MARQUES MONTEIRO N° 36/38 | LUANDA - ANGOLA | TEL: +244 (222) 330202 | FAX: +244 (222) 331921